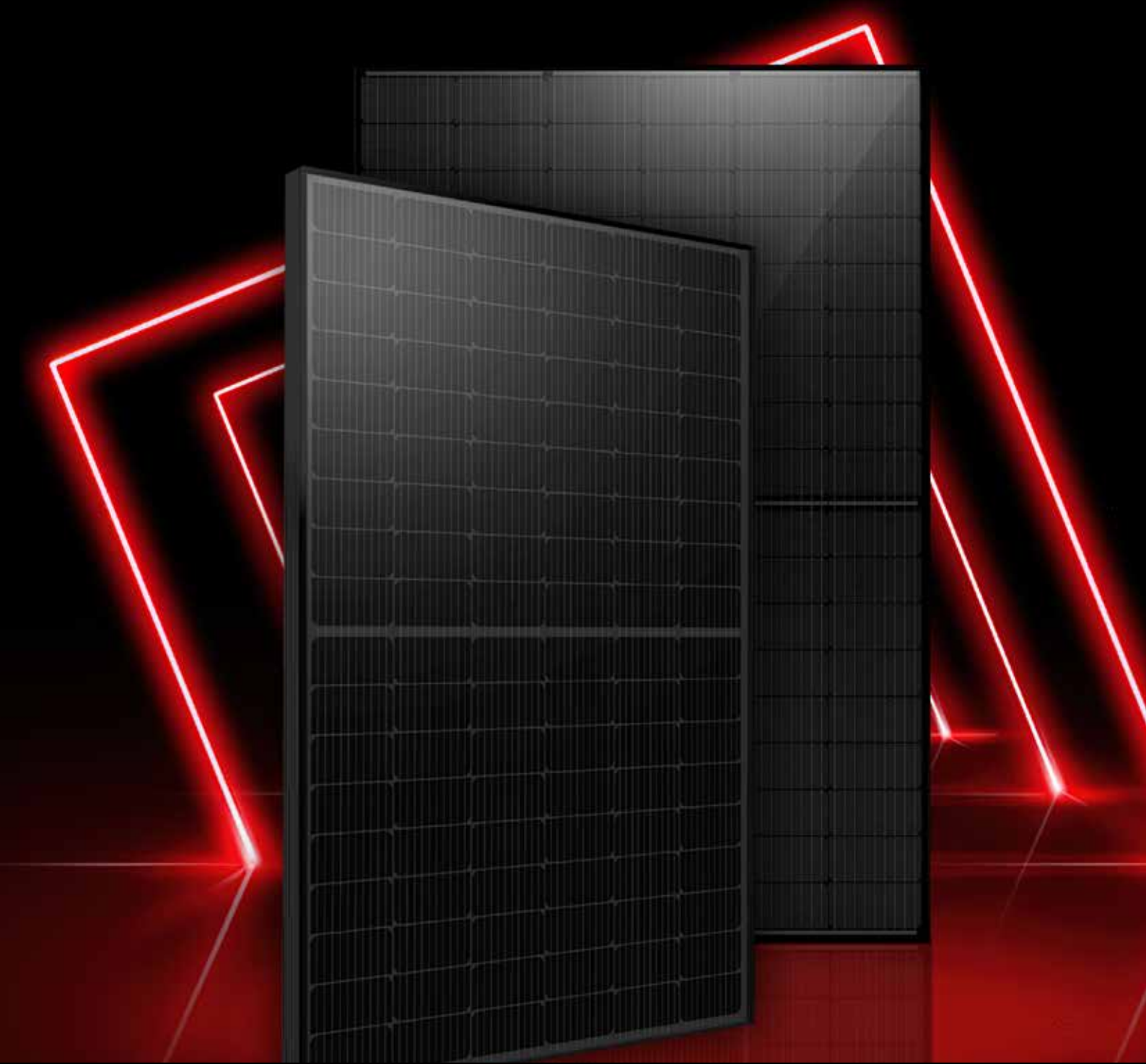


Panther
SERIES

HALF-CUT TECHNOLOGY

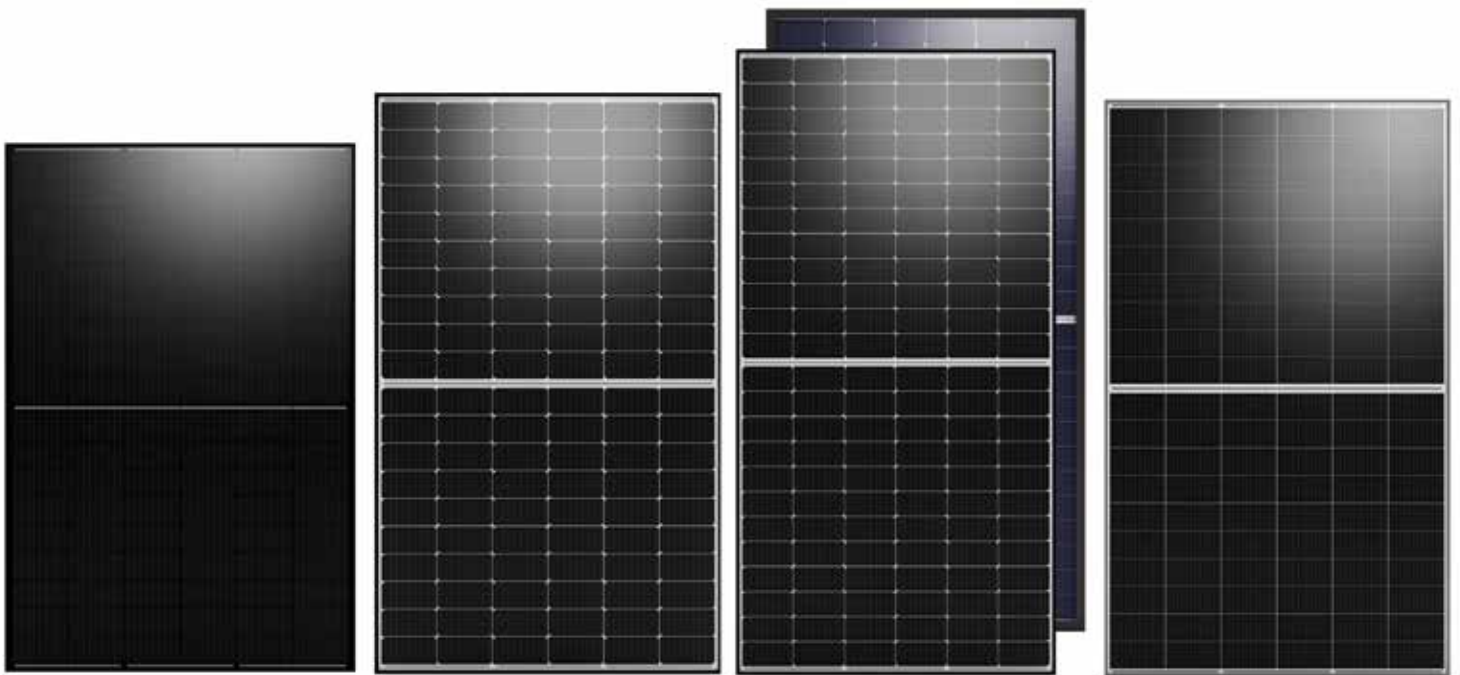


FAST RETURN
ON YOUR INVESTMENTS

RECOM
TECHNOLOGIES

HALF-CUT TECHNOLOGY

From 360Wp & up to 665Wp



Low Pmax

ADVANTAGES OF PANTHER HALF-CUT MODULES

Groundbreaking technology; higher power output and improved system performance. The ideal solution for end users who want a fast turnaround on their investments. A fully certified premium quality and high efficiency module made with A grade materials.



Industry leading
Low Pmax



Outstanding performance
under extreme heat and
low-intensity solar conditions



100% electro-
luminescence tested



★ **KEY BENEFITS**



Higher Yield per Surface Area



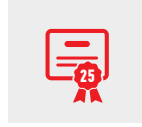
Higher Light Conversion



Low LCOE



Higher Yield in Hot Climate



25 Years Product Warranty



Low Resistive Losses

★ **PERFORMANCE AT HIGH TEMPERATURES**



HIGHER OUTPUT IN HOT CLIMATE



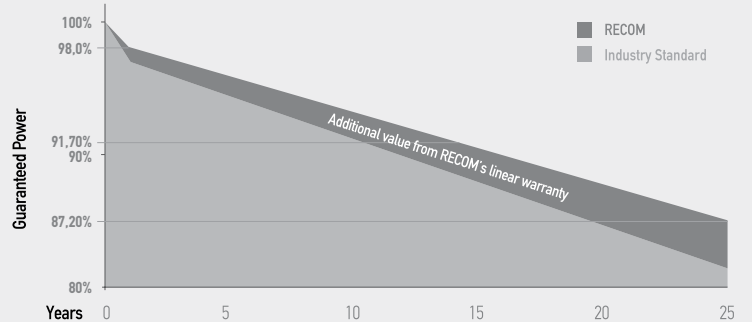
MORE EFFICIENT SPACE UTILIZATION



HIGHER GENERATION PER UNIT AREA

Recom proposes PV modules size according to the customer requirements. Recom uses several cell sizes like:

- G1: 158.75mm
- M6: 166mm
- M10: 182mm
- G12: 210mm



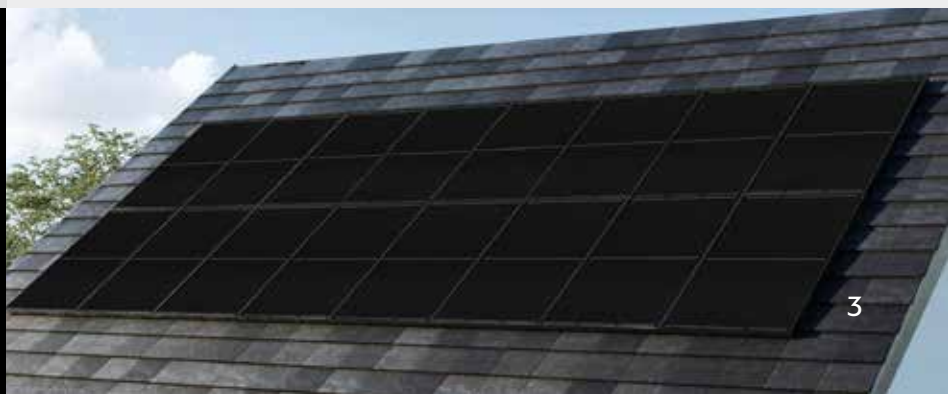
First Year Output | $\geq 98\%$

2-25 Year Decline | $\leq 0,45\%$

25 Year Output | $\geq 87,20\%$

★
Great Appearance

BLENDS PERFECTLY WITH THE ROOFTOP





WWW.RECOM-TECH.COM

SOLAR ASSOCIATION MEMBERSHIPS



SolarPower
Europe
Member