



Technology Solutions
Provider



WWW.RECOM-TECH.COM



"Our profession, by default, puts on us the responsibility and obligation to be part of meeting the challenge of halting the global warming and degradation of the environment. To meet this challenge, our ultimate goal must be to enable countries, corporations, companies, institutions, households and individuals achieve energy independence. Simply put, enable them to own the power. The solar, and only the solar, has that potential."



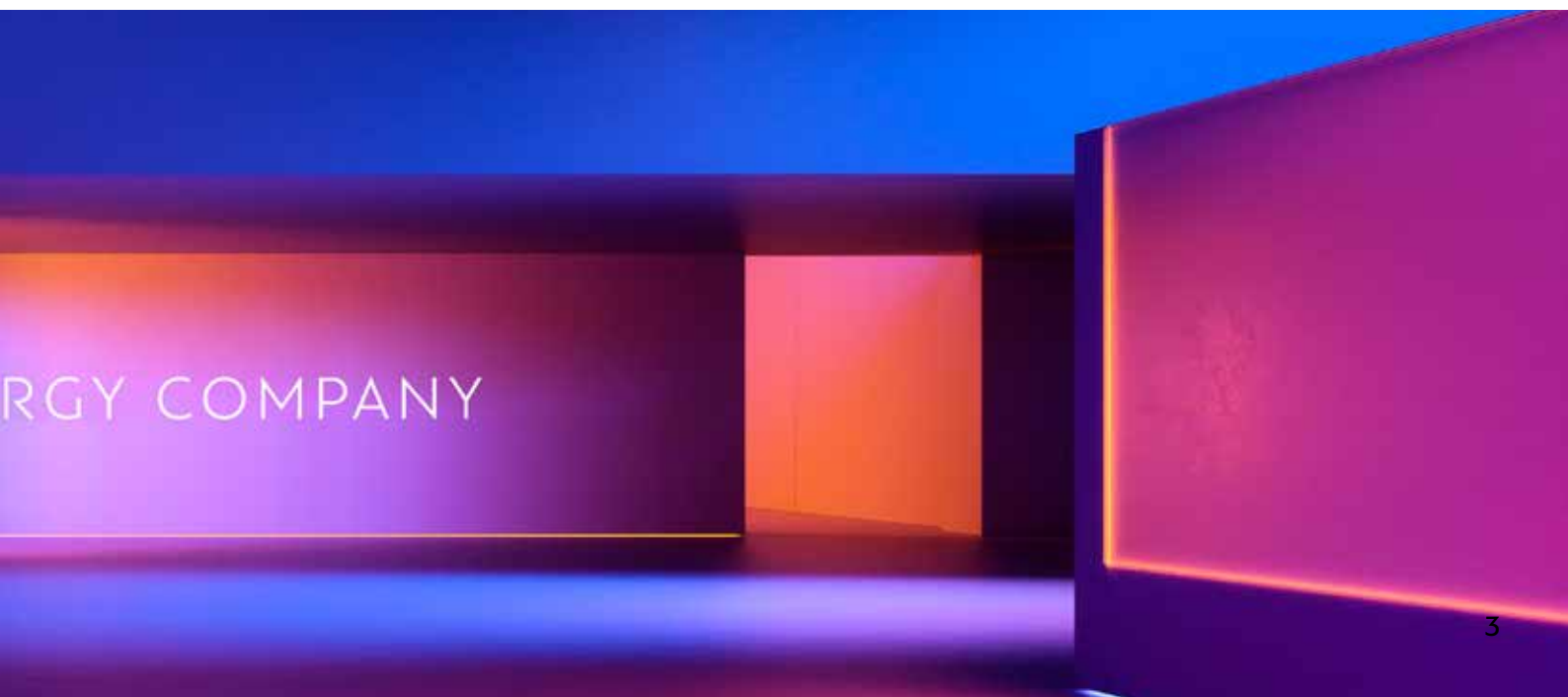
Hamlet Tunyan, CEO



RENEWABLE ENE

TABLE OF CONTENTS

About RECOM	4-5
RECOM in Numbers	6
RECOM Advantages at a Glance	7
Residential solution	8
Balcony Solutions	9
C & I solution	10
Utility solution	11
PV Modules	12-15
Inverters, Storage & Accessories	16-19
E - MOBILITY	21
Living Smart	22-23



WHO WE ARE

RECOM Technologies is a leading European company at the forefront of renewable energy and smart technology innovation, with a strong global presence. Rooted in solar energy excellence, RECOM manufactures advanced photovoltaic modules, inverters, hybrid storage systems, batteries, and EV chargers, while also delivering turnkey solutions for utility-scale, commercial, and residential solar projects - from investment through development and construction.

Today, RECOM is evolving - expanding beyond solar into smart home living, e-mobility, and connected consumer technologies. This strategic transformation reflects our vision to redefine sustainable living in a digital-first world, integrating AI-driven innovation to create seamless, energy - efficient experiences.

With an annual production capacity of over 3.2 GW in solar modules and installations spanning more than 110 countries, RECOM stands among Europe's top photovoltaic manufacturers.

Backed by a robust internal R&D team and collaborations with leading research institutions like CEA/INES in France, RECOM is pioneering the convergence of clean energy and intelligent technology. Our mission is to power a sustainable, connected future - for homes, businesses, and communities around the world.

An abstract background featuring a dark blue space filled with numerous thin, glowing blue and green lines that radiate from the right side, creating a sense of motion and energy. The lines vary in length and brightness, some appearing as sharp streaks while others are more diffuse.

LEADING EUROPEAN PV MODULE MANUFACTURER

OUR VALUES

Doing things right is one of our most important values at RECOM. We are committed to providing high-quality services and products to meet the interests and satisfaction of our customers. We provide value for money and deliver the best customer service and experience.

As we aim to achieve our dual goals of exceptional quality and fair price, we are always mindful of our commitment to act with the highest standard of integrity in all of our business decisions and actions. Internally, we are ethnically diverse, gender - equal one team, accountable and respectful among ourselves and towards others. Externally, the respect for human rights, labor laws, fair competition and environmental considerations are the guiding principles in our choices for outsourcing, procurement and end users.

WHAT DRIVES US

At RECOM, we think differently. We are driven by a bold mission: to reduce humanity's dependence on fossil fuels, bridge global inequalities, and halt the degradation of our environment. We believe that **renewable energy and smart technologies** are the foundation for a more equitable, peaceful, and sustainable world.

Clean energy, universally accessible and infinitely abundant, can empower communities across all geographies and socioeconomic backgrounds. But the future we envision goes beyond just energy - it's one where intelligent, connected technologies **enhance everyday life**, foster growth, and accelerate the transition to a low - carbon economy.

That's why at RECOM, we are constantly innovating to make **solar energy, smart infrastructure, and digital sustainability** accessible to all. Our goal is not only to **solarize the global energy supply**, but also to shape the future of **mobility, smart living, and environmental intelligence** - building a world that is clean, connected, and resilient for generations to come.

WWW.RECOM-TECH.COM

TOP PV BRAND & TOP PV SUPPLIER

FRANCE - USA - MENA - VIETNAM - HUNGARY - GREECE - NORWAY - ROMANIA - IRELAND



RECOM in numbers



Production Capacity



Year that the company was founded



Clean and affordable energy replacing 2m tons of CO₂ emission



Experienced and qualified industry personnel across many continents



Countries RECOM PV modules installed



Revenues



RECOM advantages at a glance



Module
Efficiency
up to 25,2%



Low Temperature
Coefficient
-0.24% / °C



No LID & PID



≥90%
Output After
30 Years



30 Years Product &
Output Warranty



Wide Variety



Reduced
Risk of Micro
Cracks



All Products are
Tested and Certified



Superior
Aesthetics



0% Front Grid
Shading Loss



Low-carbon
Footprint



Fast, Low Cost and Timely
Delivery From Our
European Factories or
European Warehouses
to Your Door

ENGINEERING THE FUTURE



RESIDENTIAL SOLUTION



Smart, all-in-one home energy system combining PV, hybrid inverter, battery, EV charger, and heat pump - ideal for modern, energy-independent living



PV Module Full Black

High Aesthetics
High Performance



Inverter Three Phase Hybrid

High Voltage Inverter
Higher Efficiency



High Voltage Stackable Battery

Residential ESS Solution



Solar Heat pump

Turn Sunlight Into Heating



EV Charger

Recharge Your Car



Compact plug-and-play solar kit with microinverter and battery, perfect for urban balconies and renters seeking easy energy savings.

All-in-One Balcony Energy Solar System Solution

- Convenient Charge
- High Protection - IP 65
- Extreme Weather Adaptability
- 10 Years Warranty
- Smart Connection (Bluetooth, Wi-Fi, Mobile App)
- Flexible Operation

Balcony
Transparent
PV Modules



Microinverter with battery

- IP67 protection degree
- WIFI communication
- Wireless CT, Wireless Smart Switch and Wireless BMS communication
- Max charging/discharging current 25A
- Expand two independent PV inputs
- Working in Microinverter mode or storage inverter mode
- Supports UPS load, fast switching within 4ms



Bluetooth
sockets





Scalable high-output solar system with MPS hybrid cabinet and Recom modules, tailored for commercial sites, intelligent building and industrial parks needing reliable, efficient energy and storage.

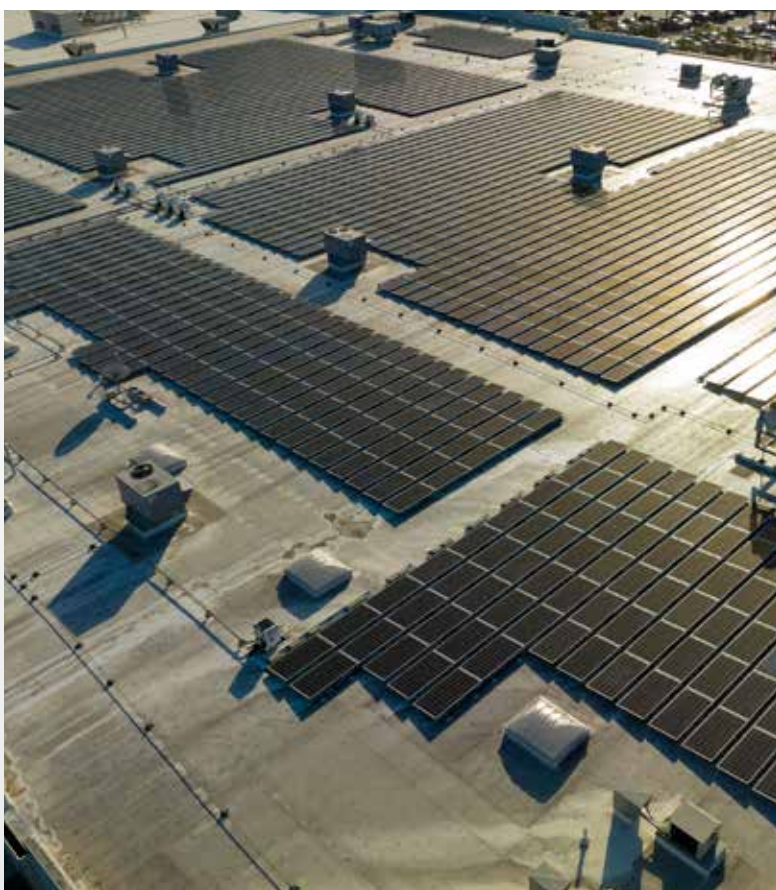


MPS Microgrid Hybrid Inverter

- Integrated PV/MPPT module/ transformer /STS and maintenance
- Support 100% unbalance
- Support parallel connection
- Easy expansion, support PV flexible configuration

PV Module

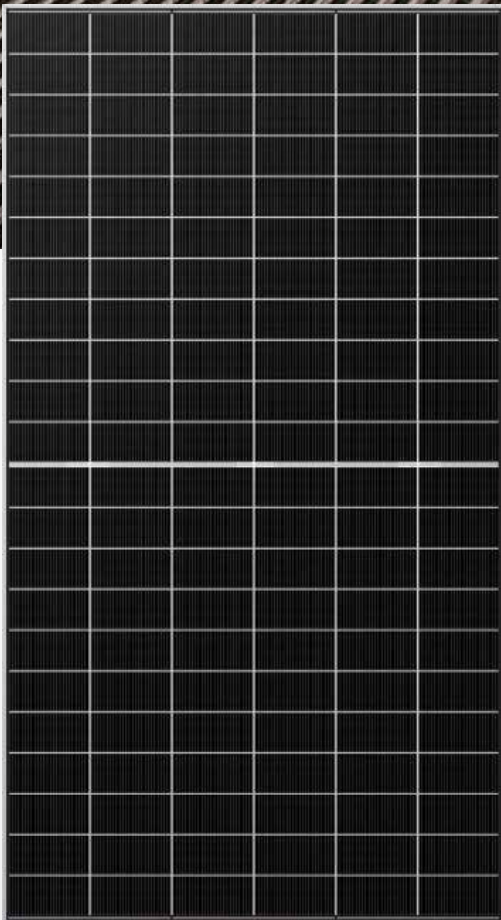
High Efficiency for Maximum Performance





UTILITY SOLUTION

Ultra-high-power modules and inverters optimized for utility-scale projects and renewable energy power plants delivering top efficiency and long-term returns in any climate.



PV Module

Power Up Your Utility
Scale Project



Inverter Three Phase with multi MPPT

Designed to enhance solar energy
harvesting for large commercial and
industrial applications.



UNLEASH THE POWER OF THE BLACK TIGER:



ADVANTAGES OF BLACK TIGER BACKCONTACT MODULES

Black Tiger modules provide numerous benefits to customers seeking a high-quality product with exceptional performance and aesthetic, captivating design.

The "Black Tiger" module utilizes N-Type cell technology in conjunction with a rear connection method known as BackContact. As a result, there is 0% front grid shadow loss, which increases the PV module yield. Due to reduced shading on the front of the cell, the module maximizes total cell area realizing higher efficiency and resulting in a fast return on investment.



KEY BENEFITS



Light Induced Degradation Close to Zero



Low Pmax Temperature Coefficient



Low LCOE



0% Front Grid Shading Loss



Higher Yield in Hot Climate

PERFORMANCE AT HIGH TEMPERATURES



HIGHER OUTPUT IN HOT CLIMATE

+2,40 %

Specific yield (kWh/kWp) due to low temperature coefficient



HIGHER GENERATION PER UNIT

+2,47 %

PV plant yield/sq.m in hot climate



MORE EFFICIENT SPACE UTILIZATION

-10,00 %

Space required for 1MWp of Black Tiger modules



LOWER POWER LOSS

+4,40 %

PV plant yield in 30 years of using



HETEROJUNCTION TECHNOLOGY

Lion
SERIES

From 430Wp & up to 750Wp

THE TECHNOLOGY OF THE FUTURE TODAY



ADVANTAGES OF LION HETEROJUNCTION MODULES

HIGH MODULE EFFICIENCY up to 24.1%

In STC condition, due to the Tandem technology, HJT modules have higher efficiency at least by 1% compared to other technologies. HJT is active on both UV and infrared wavelengths and has a higher light output.

Heterojunction (HJT) photovoltaic module is a groundbreaking technology. HJT technology guarantees high performance and low degradation of the PV module, substantially improving results and yield over time.

Lion series reaches over 750Wp power, 7% higher compared to standard PV modules.

LOW DEGRADATION

Lion series modules use HJT cell technology, which have lower degradation than Mono PERC panels.

More stable and sustainable electricity production.

HIGHER PERFORMANCE

Gain up to 20% more energy yield, in low-light conditions, in the morning and evening hours and during cloudy skies.

KEY BENEFITS



≥ 90%
Output
After 30
Years



Low
Temperature
Coefficient
-0,24% /°C



High
Bifaciality



No LID
& PID



10% - 35%
Power
Generation
Gain

PERFORMANCE AT HIGH TEMPERATURES



**HIGHER
OUTPUT IN
HOT CLIMATE**

+ 1,8 % Specific yield (kWh/kWp) due
to low temperature coefficient



**MORE EFFICIENT
SPACE
UTILIZATION**

- 6,3 % Space required for 1MWp
of LION modules



**LOWER
POWER
LOSS**

+ 5,6 % PV plant yield in
30 years of using



**HIGHER
GENERATION
PER UNIT AREA**

+ 5,9 % PV plant yield /sq.m.
in hot climate



**HIGHER
BIFACIAL
FACTOR**

+ 4,0 % Project installed with
sand soil albedo

N-TYPE PV MODULES WITH TOPCon TECHNOLOGY



From 410Wp & up to 720Wp

SUPERIOR RETURNS, POWER & LIABILITY



ADVANTAGES OF LYNX BIFACIAL MODULES

No LID (< 0.2%) & no risk of LeTID

N-type module is a fundamental solution to the risk of LID because there is no BO pairs for its phosphorus-doped substrate. After LeTID test, N-TOPCon modules show no power loss.

Bifaciality

Lynx bifacial series have been widely applied in a large number of PV systems in the world with more than 10% power gain from the bifacial design comparing to monofacial power plant (Bifaciality factor up to 80%).

"Lynx" Series module is the ideal solution for end users who want a Quality PV & reliable product over time and a fast turnaround on their investments.

KEY BENEFITS



Light Induced Degradation Close to Zero



Higher Yield per Surface Area



Anti Glare Glass



Low Pmax Temperature Coefficient



Higher Light Conversion

PERFORMANCE AT HIGH TEMPERATURES



HIGHER OUTPUT IN HOT CLIMATE

+1,28 %

Specific yield (kWh/kWp) due to low temperature coefficient



HIGHER GENERATION PER UNIT AREA

+2,01 %

PV plant yield/sq.m in hot climate



MORE EFFICIENT SPACE UTILIZATION

-5,01 %

Space required for 1MWp of Lynx modules

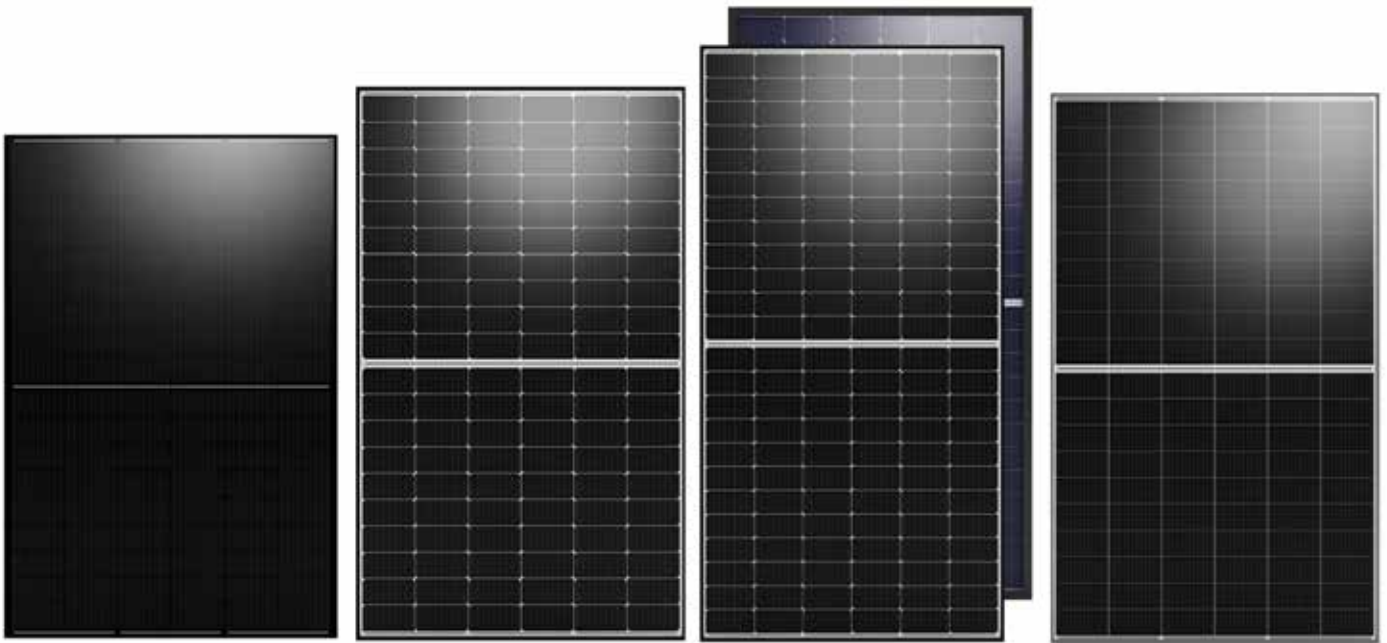


HALF-CUT TECHNOLOGY

Panther
SERIES

From 360Wp & up to 665Wp

FAST RETURN ON YOUR INVESTMENTS



ADVANTAGES OF PANTHER HALF-CUT MODULES

Groundbreaking technology; higher power output and improved system performance. The ideal solution for end users who want a fast turnaround on their investments. A fully certified premium quality and high efficiency module made with A grade materials.

25
YEARS
PRODUCT
WARRANTY



★ KEY BENEFITS



Higher
Yield per
Surface Area



Higher
Light
Conversion



Low
LCOE



Higher
Yield in
Hot Climate



Low
Resistive
Losses

★ PERFORMANCE AT HIGH TEMPERATURES



HIGHER OUTPUT
IN HOT CLIMATE



MORE EFFICIENT
SPACE UTILIZATION



HIGHER GENERATION
PER UNIT AREA

HELIOS



Single MPPT
0.6 - 3.3 kW

APOLLO



Dual MPPT
2.5 - 6.0 kW

SINGLE PHASE SERIES

- Max efficiency 98% - IP66 protection
- Zero-export feed-in operation
- DC Input: 200% oversizing
- In-built global MPP scan for higher yields during shadowing conditions
- Quick and easy commissioning / configuration

THREE PHASE SERIES



ATLAS

Dual MPPT
3 - 15 kW

- Max efficiency 98,3% - IP66 protection
- Low startup voltage
- Ultrawide MPPT voltage range
- Support high power solar panels
- Built-in export power control



POSEIDON

17 - 30 kW



ZEUS 110 kW
WITH MULTI MPPT

- Maximum efficiency up to 99.03%
- Low startup voltage
- Ultrawide MPPT voltage range
- Built-in export power control
- SPD type II protection (AC & DC)
- Maximum 75A MPPT current



HERCULES

40 - 60 kW



ZEUS

300-350 kW

High Voltage
with multi MPPT

HYBRID SERIES



ORION

Dual MPPT
3.0 - 7.5 kW

SINGLE PHASE HYBRID

- Max efficiency 97,6%- IP65 protection
- Higher efficiency on charging and discharging up to 97.0%
- Switchover time <10ms
- Low start output voltage resulting to longer operation (higher yields) throughout the day
- On & Off-grid parallel function up to 15kW
- Zero-export feed-in operation



TITAN

Dual MPPT
10kW

THREE PHASE HYBRID

- 100% unbalanced output
- Max. 10 pcs parallel for on-grid and off-grid operation Support multiple batteries parallel
- High voltage battery, higher efficiency
- 6 time periods for battery charging / discharging
- Support storing energy from diesel generator

STORAGE



PANDORA

- **Safety**
Built in explosion relief device to dredge gas, and built in fire protection device to cut off the fire source for 3 seconds.
- **High-voltage stack**
Modules are connected in series without cable connection, and high voltage platform improves system efficiency.
- **Thermal management**
Temperature detection of key parts, cell, power plug-in, etc.
- **Wide temperature operation**
Low-temperature battery cell, supports operation at >-20 degrees.
- **Environmental friendliness**
IP protection grade 65, anti-corrosion grade \geq C2, environmental protection battery.
- **Intelligent and visual**
Support remote upgrade, real-time battery warning information push, LCD data display.

DATA LOGGERS



Logger-Z

- Supports up to 32 devices
- Supports local & remote monitoring



Logger

- Local & Remote monitoring, setting and upgrade of batch inverters
- Support large-capacity data storage

MONITORING DEVICES



WiFi



LAN



WiFi Plus



4G

- Quick installation with "Plug & Play" function
- IP 65 dust prevention water proofing designs
- Stable data transmission and good reliability
- Data Transfer Interval 5 mins
- WiFi Plus
- Data Transfer Interval 10 sec

SOFTWARE (MONITORING)



- Quick and easy WIFI configuration
- Rich data analysis-Realtime/ Daily/Monthly/Yearly
- Check and control of the plant anytime, anywhere

EV CHARGERS



RECOM
TECHNOLOGIES



ADVANTAGES

- Low latency
- Offline operation
- LoRa communication
- Maximize the use of solar power
- Smart Load management
- Easily define non-essential and critical loads
- Minimize the electricity bill as much as possible
- Charging control strategy based on time and SOC



The image shows a modern, dark-colored house with a steep, gabled roof covered in solar panels. The house has large windows and a glass door, through which warm interior lights are visible. The house is surrounded by greenery and other similar houses in the background. The overall scene is set at night, with the house's lights providing a warm glow against the dark surroundings.

*Living
Smart*



E-Bike R-BK9M

Pedelec - Fat Tire Mountain Bike

- Mileage Range: 55km - 80km
- Charging time: 6-7h



E-Bike R-BK29M

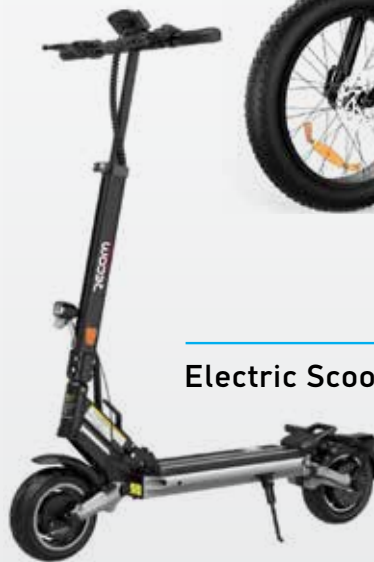
Pedelec - Fat Tire Mountain Bike

- Mileage Range: 45km - 80km
- Charging time: 7-8h



Hoverboard

- Max. speed 23km/h
- Charging time: 4-5h



Electric Scooter



Smart Watches



K70



MG91 GPS



MA 61 AMOLED

Super slim

Wireless Power Banks



Smart Ring



Smart Glasses





Dehumidifier

Create an ideal living environment



- Air Purifying
- Sleep Mode
- Auto Dehumidifier
- Built-In Ionizer
- Safety Child Lock

Robot Vacuum Cleaner

- Bow & Y Route
- Laser Obstacle Avoidance Sensor
- Control Wet Mopping
- Manage Map On App
- Smart Water Tank
- Smart Anti-Falling
- Time Scheduling



Solar Triple Lens Linkage Camera

- x10 Zoom
- Wi-Fi & 4G Dual Network
- Easy Installation
- Ultra Energy Efficient
- Real Time Monitoring
- PIR Thermal Detection
- Auto Tracking & Timely Alerts
- Waterproof & IP66 Dust





WE WORK WITH AND FOR THE WORLD

WWW.RECOM-TECH.COM